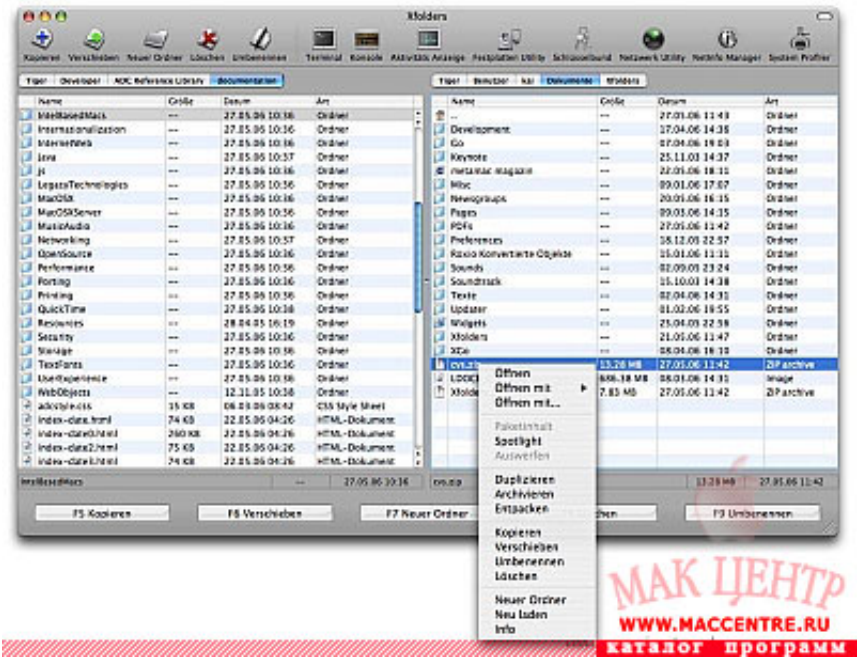




[Xfolders For Mac](#)



[Xfolders For Mac](#)



What you may have, based on your description, is particular rules that move emails to those mailboxes.. You can name a rule anything you want The Mailboxes are actual email accounts Depending on the type of email account, the emails in those may exist solely on your mac or on both the server and your mac.. On My Mac holds folders that are +on your mac+ You can move emails into those folders to store them locally, archive, etc.

Rules are not setup on a per mailbox basis Rules act automatically on the inbox when mail arrives, or they can be run manually, but you don't set up a rule for a Mailbox.

xcopy all files and folders

xcopy all files and folders, xcopy folders, xcopy folders and subfolders, xcopy multiple folders, xfinity email folders missing, xcopy exclude folders, xcopy not copying folders, xcopy folders only, xcopy empty folders, xcopy sync folders, xfolders, folders mac, xfolders macos, folders for osx, download exfolders, macos folders, xfolder mac 10.5

xcopy folders and subfolders

xfinity email folders missing

e10c415e6f